

# ALL-BISQUE DOLLS

These small dolls have one thing in common: the entire doll is porcelain. Most are German and from the beginning of the 20<sup>th</sup> century. Some are head-torso dolls, others one-piece dolls, dolls with molded shoes and socks, dolls with molded clothes. Some have painted and others glass eyes. Some have molded hair, others cut-off crown and wig.

**KEY:** If mold number is for the complete doll, it will have an "ST" added to the number (eg. **S474ST**). Head-torso: head and torso are one piece. Only shoulders and hips are jointed. General instructions for stringing all-bisque dolls can be found in *Doll Artisan* Vol. 17, No. 6.

## Mignonnette style all-bisque dolls

S474ST



Antique



Doll by Cindy Guillette



Antique

S475ST

### Faberge

This delicate all-bisque French doll originally came in a fabric-covered egg. This doll has tapered arms and legs, with white socks and pale blue boots. Unmarked. Article: *Doll Artisan*, Vol. 20, No. 5.

Doll size: 5" (13cm), head circ.: 2.5" (6.5cm), eyes: 4mm

**S474ST** Faberge© mold set (2 molds). Wt. 7lbs.

**WSABD15** Painting worksheet.

**CP946** Dress pattern (shown on doll).

### Periwinkle

French all-bisque doll with a wardrobe and trunk. Head and each limb is incised with a 2. Solid-dome head with painted circle on top. Wardrobe includes 3 dresses, 2 hats, and 5 pieces of underwear. Articles: *Doll Artisan* Vol. 20, No. 6, *DOLLS Beautiful* 2004-1.

Head circ. 2.75" (7cm), Eyes 4mm, Doll Size 5.5" (14cm)

**S475ST** Periwinkle© mold set (3 molds). Wt. 7lbs

**WSABD16** Painting worksheet.

**CP947** Wardrobe pattern (shown on doll)



Doll by Cindy Guillette

S473ST



CP945

### Belladonna

Extremely rare, beautiful all-bisque French doll. Finely sculpted features, like those of a fashion doll, and unusual detail make her uncommon. Note the cupped hands. Unmarked. Article: *Doll Artisan*, Vol. 20, No. 3.

Doll size: 7" (18cm), head circ.: 4.75" (12cm), eyes: 6mm

**S473ST** Belladonna mold set (4 molds). Wt. 13lbs.

**WSABD17** Painting worksheet.

**CP945** Dress, hat, chemise pattern



NEW!

S4748T

Doll by Virginia Gale

### Bluebell

Jointed all-bisque doll known as Simon & Halbig's Blue-Stocking Girl because of her molded stockings and shoes. Marked: 4, 886. Article: *Doll Artisan* Vol. 23, No. 2.

Doll size: 7" (18cm), head circ.: 4.38" (11cm), eyes: 6mm

**S457ST** Bluebell complete, 4 molds. Wt. 10lbs.

**WSAB2** Worksheet.

**Patterns:**

**CP925** Straight dress, underwear

**CP926** Fitted dress with variations

S457ST



Antique



CP925



CP926



S460ST

Doll by Lis Jones

### Primrose

Well-sculpted all-bisque doll with bare feet, one open hand and one closed. Attributed to Kestner. Marked III on head and body. Articles: *Doll Artisan*, Vol. 16, No. 2; Vol. 21, No. 5; Vol. 24, No. 1

Doll size: 7.25" (18cm), head circ.: 4.75" (12cm), eyes: 6mm

**S460ST** Primrose complete, 4 molds. Wt. 12lbs.

**WSABD6** Primrose worksheet.

**CP932** Primrose wardrobe, dresses, underwear pattern

### Summersweet

Doll originally by JD Kestner. Article: *Doll Artisan* Vol. 24, No. 5.

Doll size: 6.25" (16cm), eyes: 8mm, head circ.: 4.25" (11cm)

**S478ST** Summersweet mold set.

**WSABD20** Worksheet.

**CP919** Dress and bloomers pattern. (shown on Nancy)

**MOWIGETTE10** Golden Blonde mohair locks.

# Other French and German all-bisque Dolls



## Little Beth

Lovely jointed all-bisque head-torso French doll attributed to Bru. Delicate features, glass eyes, open crown, and well molded bare feet. Article: *Doll Artisan* Vol. 19, No. 4.

Doll size: 5" (13cm), head circ.: 3.5" (9cm), eyes: 4mm

**S403ST** Little Beth mold set. Wt. 6lbs.

**CP914** Dress, hat, coat, vest, panties, shoes pattern.



CP914



## Robie and Kestner Baby

Chubby baby with molded hair and painted eyes. Head-torso doll. Article: *DOLLS Beautiful* 2003-2.

**WSABD23** Robie & Kestner Baby worksheet.

### Robie

Doll size: 7" (17.75cm). Marked: 589

**S435ST** Kestner's Robie mold set.

#### Pattern:

**CP920** Christening outfit, partly knitted, partly crocheted. Includes dress, pants and bonnet. (shown on doll)



### Kestner Baby

Smaller version of Robie. Marked: 3.

Doll size 5.25" (13cm)

**S404ST** Kestner Baby complete, 3 molds. Wt. 6lbs.

#### Patterns:

**CP902** Baby outfit: dress, slip, diaper, bonnet, pillow

**L13405** Baby Layette.

(see **BB6.55** compo body section to see same style pattern: **L13408**)



Doll by Joanne Charima

**S465ST**

## Iris

Petite head-torso all-bisque doll has molded, unpainted socks, high-button shoes, and glass eyes. Most likely produced in the mid-1880's; attributed to Kestner. Cupped hands and pegged legs. Article: *Doll Artisan* Vol. 19, No. 2.

Doll size: 7" (18cm), head circ.: 4.5" (11.5cm), eyes: 8mm

**S465ST** Iris mold set (3 molds). Wt. 9.5 lbs.

**WSABD12** Iris worksheet.

**CP943** Dress, tulle overdress, chemise and drawers pattern. (shown on doll)



Dolls by Lis Jones

**S416ST**

## Gem

Googly-eyed little all-bisque doll originally from Kestner firm in Germany. Marked: *Germany III*. Molded shoes and socks. Head-torso dolls with 8 joints. She can have sleep eyes. Article: *Doll Artisan* Vol. 25, No. 2. (painting, stringing, sleep eyes instruction)

Doll size: 4.13" (10.5cm), head circ.: 3.13" (8cm), eyes: 4-6mm

**S416ST** Gem mold set. Mold wt. 3 lbs. (2 molds)

**CP950** Gem boy's suit, girl's dress, underwear pattern.

(shown on doll)

**EL17** Elastic.



Doll by Margaret Wolfe-Wilson

**S480ST**

## Johnny-Jump-Up

A new little brother to Nancy Girl (**S407ST**). Innocent looking all-bisque doll; circa 1914.

Possible origin: Hertwig & Co or made by Louis Amberg in Germany. Molded blond hair, jointed arms and legs, wire strung. Dimpled knees. Head and torso in one piece. Article: *DOLLS Beautiful* 2004-1.

Doll size: 5.75" (14.6cm)

**S480ST** Johnny-Jump-Up mold set (2 molds). Mold wt. 8 lbs.

**WSABD24** Worksheet.

**CP592** Shirt, Knickers and Underwear pattern.

(shown on doll)

## Nancy

Content little all-bisque girl. Molded decorated with two molded bows. Head-torso doll with molded shoes, painted eyes. Article: *Doll Artisan*, Vol. 25, No. 6.

Doll size: 6" (15cm)

**S407ST** Nancy Girl complete, 3 molds. Wt. 13lbs.

**WSABD22** Nancy Worksheet.

#### Patterns:

**CP908** Smocked dress, drawers. (see *Forget-Me-Not*)

**CP919** Dress and bloomers. (shown on doll)



Doll by Mary Yoder

**S407ST**



## Marnie

Head-torso doll, girl or boy. Open mouth with carved teeth, molded shoes and socks. Marked: 257, 14, SWC. Article and crochet patterns: *Doll Artisan* Vol. 13, No. 6. Doll size: 4.75" (12cm) eyes: 4mm  
**S449** Marnie complete mold.  
**EL17** Elastic.

**NEW!**



Doll by Annette Schenck

## Little Sunflower

All-bisque Heubach with molded hair, head-torso doll, and painted intaglio eyes. Article: *Doll Artisan* Vol. 24 No. 1. Doll size: 7" (18cm)  
**S477ST** Little Sunflower mold set (3 molds).  
**WSABD19** Worksheet.  
**CP949** Pintucked dress with combination, underwear pattern (*shown on doll*)



S462ST

Doll by Helen Schaefer

## Honeysuckle

All-bisque doll; sister to *Bluebell*, sometimes called Brown-stockings girl. Molded above-the-knee stockings and molded shoes with heels and bows. Head-torso doll, painted eyes. Marked 0 on head, arms, and legs. Articles: *Doll Artisan*, Vol. 17, Nos. 4 and 5.

Doll size: 5" (13cm), head circ.: 3" (8cm),  
**S462ST** Honeysuckle complete (3 molds). Wt. 5lbs.  
**WSABD8** Honeysuckle worksheet.  
**CP938** Dress with lace overlay and pantaloons pattern. (*shown on doll*)



Antique

S414

## Peterkins

All-bisque doll. No movable parts. Molded, painted body suit. Painted eyes. Molded hair. Article: *Doll Artisan* Vol. 25, No. 4.

Doll size: 4.75" (12cm)  
**S414** Peterkins mold. Wt. 6 lbs.

## Forget-Me-Not

All-bisque, head-torso doll, jointed at shoulders and hips. Painted eyes, molded shoes and socks. Her hands and wrists are unique: right is cupped, left is open. Marked: *Made in Germany*. Article and instructions for dress shown in photo: *Doll Artisan* Vol. 18, No. 5.

Doll size: 5.5" (14cm), head circ.: 4.25" (11cm)  
**S464ST** Forget-Me-Not mold set (3 molds).  
 Wt. 8lbs.

**WSABD10** Forget-me-not worksheet.

Patterns:

**CP908** Smocked dress, drawers  
**CP919** Dress, bloomers (*shown on Nancy*)  
**CP933** Coat-dress, underwear



S464ST

Doll by Pamela Lembo

## Ethel Rosebud

A bud of a doll! This tiny all-bisque doll will be the perfect accessory for your large dolls! *Ethel* is a head-torso doll and has molded hair, painted eyes and a closed mouth. Article: *Doll Artisan*, Vol. 23 No. 3.

Doll size: 4.5" (11cm), head circ.: 1.75" (4.5cm)  
**S476ST** Ethel Rosebud complete mold set.  
**WSABD18** Worksheet.



CP933



CP908



Dolls by Joanne Charima

S469ST, S468ST

## Edelbud and Edelweiss

Edelweiss and her little sister, Edelbud, are attributed to the Gebrüder Heubach company. Edelweiss has a one-piece head-torso with jointed arms and legs. She has side-glancing intaglio eyes, and a slightly upturned, smiling mouth. Edelbud, the tiny, one-piece all-bisque doll in the photo. Article: *Doll Artisan* Vol. 20, No. 1. **WSABD13** Worksheet for Edelweiss and Edelbud

### Edelweiss:

Doll size: 7.25" (18 1/2cm), head circ. 5.75" (14.5cm)

**S468ST** Edelweiss mold set (3 molds). Wt. 9lbs.

**CP944** Edelweiss dress pattern (shown on doll)

**CP949** Pintucked dress with combination, underwear pattern (shown on Little Sunflower)

### Edelbud:

Doll size: 4" (10cm), head circ.: 3.25" (8.5cm)

**S469ST** Edelbud mold set (1 mold). Wt. 5lbs.

Crocheted dress pattern not available.



Doll by Pam Kerfs

S453ST

## Elsbeth

Smiling all-bisque doll with three molded bows in hair. Tilted head. Made by Gebrüder Heubach. Marked: 10490 3. Head-torso doll. Intaglio eyes. Open-closed mouth. Molded shoes and socks. Article: *Doll Artisan*, Vol. 23, No. 4.

Doll size 7.25" (18cm)

**S453ST** Elsbeth complete, 3 molds. Wt. 19lbs.

**WSAB1** Elsbeth worksheet.

### Patterns:

**CP919** Dress and bloomers

(shown on Nancy)

**CP949** Pintucked Dress with underwear.

(shown on Little Sunflower)

(Pattern for dress shown in photo not available)



CP915

S443ST

## Sarah

German head-torso doll with deeply molded hair, molded shoes and stockings. Painted eyes. Article: *Doll Artisan* Vol. 18, No. 4.

Doll size: 8" (20cm)

**S443ST** Sarah complete, 3 molds. Wt. 15lbs.

**WSABD5** Sarah worksheet.

### Patterns:

**CP915** Dress, hat, and petticoat, combination

**CP942** Crocheted hat, dress, cape (shown on doll)



Doll by Mary Raleigh

S479ST

## Snowdrop

All-bisque baby doll originally made by Kammer & Reinhardt. Fully articulated head, arms, legs and torso. Original doll has sleep eyes. Articles: *Doll Artisan* Vol. 25, Nos. 1 and 3 (dress pattern and worksheet).

Doll size: 4.25" (11cm), head circ.: 3.5" (9cm), eyes: 5mm

**S479ST** Snowdrop mold set (2 molds). Mold wt. 5.5 lbs.

**WSABD21** Worksheet.

**CP951** Snowdrop christening gown, slip, diaper and bonnet pattern. (shown on doll)

## Sweet William

Sweet William will pair up nicely with many of the all-bisque girls, either as a big or little brother. Molded hair, molded socks and shoes, painted eyes. Head-torso doll, marked *Germany 31/2 8159*. Article: *Doll Artisan*, Vol. 16, No. 5.

Doll size: 6.75" (17cm)

**S461ST** Sweet William complete, 3 molds. Wt. 10lbs.

**WSABD7** Sweet William worksheet.

**CP934** Sweet William sailor suit and underwear pattern



CP934

## OTHER ALL-BISQUE DOLLS AVAILABLE, BUT NOT PICTURED:

NAME	HEAD MOLD #	MARKING	DOLL SIZE	EYES	HEAD CIRC.	BODY INFO	PATTERNS	WORKSHEET/REFERENCES
Hey, You, Who, Me? (Heubach)	<b>S466ST</b>	9744	3.75" x 4"	Painted	5.5" (13.5cm)	n/a	n/a	Worksheet: <b>WSABD11A</b> . Article: <i>Doll Artisan</i> Vol. 19, No. 1
Bridget (L. Wolf)	<b>S467ST</b>	9743	(9.5 x 10cm)					n/a
Buttercup (Kestner)	<b>S412</b>	222	9" (23cm)	10mm	7.5" (19cm)	<b>ALB9412, TB6.5S</b>	<b>L13909</b>	Worksheet: <b>WSABD3</b> Articles: <i>Doll Artisan</i> Vol. 15 No. 4; Vol. 23 No. 2; Vol. 24 No. 1
	<b>S458ST</b>	n/a	8.25" (21cm)	8mm	5" (13cm)	n/a	<b>CP927</b>	
Cupid	<b>S447</b>	949	4.75" (12cm)	Painted	Painted	n/a	n/a	n/a
Li'l Tough (Heubach)	<b>S470ST</b>	10212	3.25" (8.5cm)	Painted	3" (8cm)	n/a	n/a	Article: <i>Doll Artisan</i> Vol. 19 No. 5.
Sweetpea (Kestner)	<b>S459ST</b>	150, 6	8.75" (22cm)	8-10mm	6.25" (16cm)	n/a	<b>CP930</b>	Worksheet: <b>WSABD4</b> Articles: <i>Doll Artisan</i> Vol. 15 Nos. 5 and 6 (pattern).
Elva (Heubach)	<b>S418</b>	9578	6.5" (16cm)	Painted	4.75" (12cm)	<b>ALB9427</b>	<b>L13407, CP906, CP908</b>	n/a



hair, molded socks and shoes, painted eyes. Head-torso doll, marked *Germany 3 1/2 8159*. References: Worksheet for All-Bisque Dolls, **WSABD7**; The Doll Artisan, Vol. 16, No. 5. Doll size 6.75" (17cm)  
**S461ST Sweet William**© complete, 3 molds. Wt. 10lbs. Pattern: **CP934** Sweet William sailor suit and underwear

**H. Honeysuckle New!**

Created in Germany during the 1890's, a sister to Bluebell, sometimes called Brown-stocking girl. Molded above-the-knee stockings and molded shoes with heels and bows. Head-torso doll, painted eyes. Marked 0 on head, arms, and legs. References: Worksheet for All-Bisque Dolls, **WSABD8**; The Doll Artisan, Vol. 17, No.4 and No. 5. Head circ 3" (8cm), Doll size 5" (13cm)  
**S462ST Honeysuckle**© complete, 3 molds. Wt. 5lbs. Pattern: **CP938** Dress with lace overlay and pantaloon



**I. Sarah**

Lovely German head-torso doll with deeply molded hair, molded shoes and stockings. Painted eyes. References: *Making Porcelain Dolls*; Worksheet for All-Bisque Dolls, **WSABD5**. Doll size 8" (20cm)  
**S443ST Sarah**© complete, 3 molds. Wt. 15lbs. Patterns: **CP915** Dress, hat, and petticoat, combination, **CP942** Crocheted hat, dress, cape

**J. Nancy**

Content little girl. Molded hair decorated with two molded bows. Head-torso doll with molded shoes, painted eyes. References: *Small Dolls*; The Doll Artisan, Vol. 16, No. 1. (Doll shown similar to Nancy.) Doll size 6" (15cm)  
**S407ST Nancy Girl**© complete, 3 molds. Wt. 13lbs. Patterns: **CP908** Smocked dress, drawers **CP919** Dress and bloomers



**K. All-Bisque Hilda V**

Favorite-baby doll. References: Worksheet for Baby Dolls, **WSBD13**; The Doll Artisan, Vol. 17, No. 6. Fits body mold **ALB9427**. Head circ. 5" (13 cm), Eyes 6mm, Doll size 6.5" (17 cm).  
**S239 Hilda V**© head mold. Wt. 3lbs. Patterns: **L13407** Baby layette **CP906** Boy's suit **CP908** Smocked dress, drawers

**L. Sailor Boy and Erik**

Two little all-bisque dolls, perfect pendants or ornaments. One in molded winter costume, the other in summer sailor suit. Both from the turn-of-the-century, both have jointed shoulders. Reference: *Small Dolls*. Doll size 3.5" (9cm)  
**S445 Sailor Boy**© complete, 1 mold. Wt. 4lbs. **S446 Erik**© complete, 1 mold. Wt. 4lbs.





**M. Marnie**

Sweet little head-torso doll, girl or boy. Open mouth with carved teeth, molded shoes and socks. Marked: 257, 14, SWC. Reference: *Small Dolls*. Eyes 4mm, Doll size 4.75" (12cm)  
**\$449 Marnie**© complete, 1 mold. Wt. 4lbs.  
 Pattern in *Small Dolls*, pg. 10

**N. Grace-Drayton Boy and Girl**

*Two dolls share one body.*  
 These dolls have also been called Dolly Dingle and Billie Bumps.

**Grace-Drayton Girl**

Girl with molded hairdo. Painted eyes. Reference: *Porcelain Dollmaking ABC*. Fits body mold **ALB9439**.  
 Head circ. 8.25" (21cm), Doll size 9.5" (24cm)  
**\$439 Grace-Drayton Girl**© head mold. Wt. 6lbs.  
 Pattern: **CP911** Dolly Dingle dress and bloomers

**Grace-Drayton Boy**

Boy with molded hairdo. Painted eyes. Reference: *Porcelain Dollmaking ABC*. Fits body mold **ALB9439**.  
 Head circ. 8.25" (21cm), Doll size 9.5" (24cm)  
**\$440 Grace-Drayton Boy**© head mold. Wt. 7lbs.  
 Pattern: **CP912** Billie Bumps' pants, bloomers

**O. Elva**

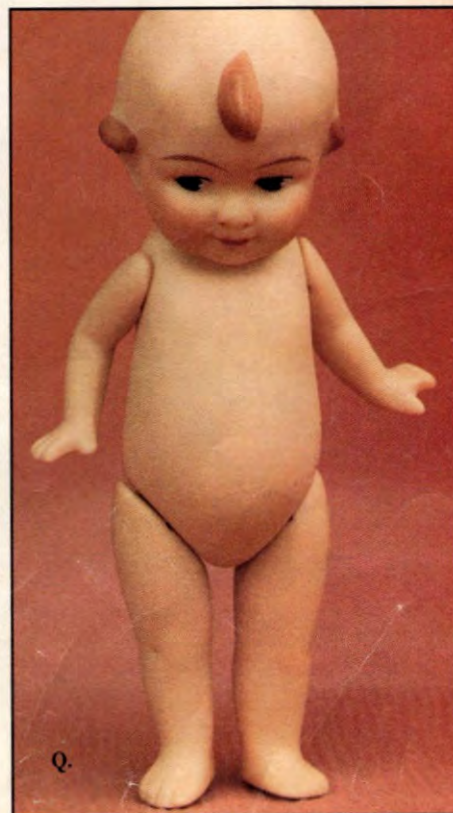
Darling little doll by Gebruder Heubach. Set-in or painted googly eyes. Marked: 9578. Fits body mold **ALB9427**.  
 Head circ. 4.75" (12cm), Doll size 6.5" (16cm)  
**\$418 Heubach Elva**© head mold. Wt. 1lb.  
 Patterns:  
**L13407** Baby Layette  
**CP906** Boy's suit  
**CP908** Smocked dress, drawers

**P. Bridget**

Googly-eyed doll with open/closed smiling mouth. By Louis Wolf & Co. Marked: 222. Reference: Seeley, *The Complete Book of All-Bisque Dolls*, pg. 65, ill. 5. Fits body mold **ALB9412**, also compo. body **TB6.5**.  
 Head circ. 7.5" (19cm), Eyes 10mm, Doll size 9" (23cm)  
**\$412 Bridget Googly**© head mold. Wt. 4lbs.  
 Pattern: **L13909** Romper suit with variations

**Q. Cupid**

Needs only little pink or blue bows around his wrists to become a lovely baby-shower gift. Or bow and arrow for Valentine's Day. Painted eyes. Molded hair. Head-torso with jointed arms. Made in Germany and marked: 949. Reference: *Small Dolls*.  
 Doll size 4.75" (12cm)  
**\$447 Cupid**© complete, 1 mold. Wt. 8lbs.



# Body Molds - Smaller

Bodies for smaller dolls, such as All Bisque Dolls, Milettes, and others.



ALB9100



ALB9200



ALB9433



OED3090

## French

### SFBJ Body 8"

Child body, jointed at hips, shoulders, knees and elbows. 9 pieces. Fits heads w. approx. 7½" C: S8 Little Googly, S116 Hepsie, S24 Googly Isabel, S602 Funny Face, S13 JDK Oriental, S306 Laughing Jumeau.

ALB9100 Body mold® 4 molds ..... \$48.00

### Child Body 7½"

French child body for Milettes and other small dolls. 9 pieces. Fits S87, S88, S89, S90, S91, S92, S94, S95, S99, S150, S152, S163, S98, all Milette-size dolls.

ALB9200 Body mold® 3 molds ..... \$48.00

## German

### Baby Body 6"

Baby body with bent arms and legs. 5 pieces. Fits S238 Hilda IV, S433 SFBJ Pouty.

ALB9433 Body mold® 3 molds ..... \$30.00

### Toddler Body 7"

Chubby toddler body. 5 pieces. Fits S439, S440, Grace-Drayton Boy and Girl.

ALB9439 Body mold® 2 molds ..... \$25.00

### Toddler Body 6½"

Toddler body w. straight legs and curved arms. Curved legs substituted on request: **Order L9412C**. 5 pieces. Fits S412 Bridget, S438 Black Mandy, S140 Demalcol, S237 Hilda III, S6 Peter - Marie, S56 Peter - Marie, S51 Nan.

ALB9412 Body mold® 3 molds ..... \$36.00

### Toddler Body 5¼"

Toddler body with straight legs. 5 pieces. Fits S417 Googly Girl, S418 Elva, S419 Googly Boy, S429 Cedrik, S239 Hilda V.

ALB9427 Body mold® 2 molds ..... \$26.00

### Child Body 9"

Child body with straight legs. 5 pieces. Neck hole 1½" diam. Fits S9 Little Grump, S13 JDK Oriental, S120 Frank - Frieda, S303 K★R Pouty, S10 Whistler, S11 Lorie, S40 Kramer, S158 Ingrid, S64 Girl Character.

ALB9301 Body Mold® 3 molds ..... \$45.00

### Child Body 9"

Long-legged child body. 5 pieces. Fits S442 All-Bisque Girl.

ALB9442 Body Mold® 3 molds ..... \$35.00

### Child Body 7½"

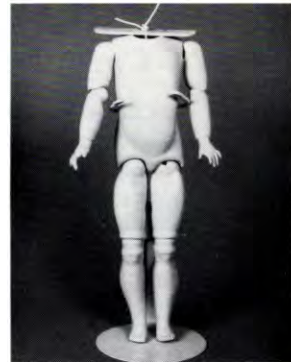
Slim Child body for cabinet size German dolls - same size as Milettes. 9 pieces. Fits S151 Mein Liebling III, S6 Peter - Marie, S42 Arthur, S53 Thursday Child, S56 Peter - Marie, S157 Tadeus.

ALB9201 Body mold® 5 molds ..... \$45.00

### Child Body 5"

Body w. straight legs. 5 pieces. Fits OED3033 Moritz.

OED3090 Body mold® 1 mold ..... \$30.00



ALB9201



ALB9439



ALB9412



ALB9427

Body sizes are for fired porcelain body.

# All Bisque Dolls

## Molds

Small dolls with one thing in common: The entire doll is of bisque. Most are German and from the beginning of this century. Some are head-torso dolls, others one-piece dolls, dolls with molded shoes and socks, dolls with molded clothes. Some have painted, others glass eyes. Some have molded hair, others cut-off crown and wig. A delightful group, many of them featured in *Dollmaker's Workbook*, *All Bisque Dolls* (ABD).



**Bridget**

Googly-eyed doll with open-closed smiling mouth. By Louis Wolf & Co. Marked: 222. 9" doll. Ref. ABD.

Fits body mold ALB9412, also compo. body TB-6½".

**S412 BridgetGoogly®** head mold... \$25.00



**Black Mandy**

Beautiful, black child. Painted eyes, molded hair. Marked: *Mandy*. Open-closed smiling mouth. 9" doll. Ref. ABD.

Fits body mold ALB9412.

**S438 Black Mandy®** head mold.... \$25.00

Dolls above fit:

**ALB9412** Body Mold 6½" body (3 molds) ..... \$36.00



**Googly Boy**

Googly-eyed charmer. Intaglio eyes, molded hair. Made by A. Marseille. Marked: 320. 7" doll. Ref. ABD.

Fits body mold ALB9427.

**S419 Googly Boy®** head mold ..... \$15.00

**Googly Girl**

Lovely doll, makes sweet pair with S419. Intaglio eyes, molded hair. Made by A. Marseille. Marked: 210. 7" doll. Ref. ABD.

Fits body mold ALB9427.

**S417 Googly Girl®** head mold ..... \$15.00



**Cedric**

Irresistible boy with molded hair. Made by Kestner. 6½" doll. Ref. ABD, pg. 65, ill. 4.

Fits body mold ALB9427.

**S429 Cedric®** head mold..... \$20.00



**Elva**

Darling little doll by Gebruder Heubach. Set-in or painted googly eyes. Marked: 9578. 7" doll. Ref. ABD.

Fits body mold ALB9427.

**S418 Heubach Elva®** head mold... \$24.00

Dolls above fit: **ALB9427** Body Mold 5¼" body (2 molds) \$26.00  
Pattern: **CP917** Two-piece boy's suit (ALB9427) \$2.00

Reference: ABD: *Dollmaker's Workbook*, All-Bisque Dolls



## All Bisque Dolls



**Grace-Drayton Boy and Girl.**  
These dolls have also been called  
**Dolly Dingle and Billie Bumps.**

### Grace-Drayton Girl

Molded girl's hairdo. Painted eyes. Fits  
body mold ALB9439. 9½" doll. Ref. ABD.

**S439 Grace-Drayton Girl®**  
head mold..... \$17.00

Pattern

**CP911** Dolly Dingle dress and  
bloomers..... \$1.50

### Grace-Drayton Boy

Molded boy's hairdo. Painted eyes. Fits  
body mold ALB9439. 9½" doll. Ref. ABD.

**S440 Grace-Drayton Boy®**  
head mold..... \$17.00

Pattern

**CP912** Billie Bump's pants,  
bloomers..... \$1.50

Dolls above fit:

**ALB9439** Body mold 7" toddler body  
(2 molds)..... \$25.00



### Gem

Googly-eyed little doll. Marked: *Germany 111*. Molded shoes and socks. Head-torso doll w. 8 joints. 4½" doll. Ref. ABD.

**S416ST Gem®** complete, 2 molds... \$40.00



### Dulce

Smiling mini-googly with painted eyes. Bald head for wig. Molded shoes and socks. 5⅞" head-torso doll. Ref. ABD.

**S420ST Dulce®** complete, 2 molds... \$32.00  
Pattern

**CP916** Dress, drawers, bonnet..... \$2.50



### Cupid *New!*

Needs only little pink or blue bows  
around his wrists to become a lovely  
baby-shower gift. Or bow and arrow for  
Valentine's Day. Painted eyes. Molded  
hair. Jointed arms. Made in Germany.  
Marked: 949. 4¾" head-torso doll. Ref.  
ABD, pg. 50.

**S447 Cupid®** complete, 1 mold .... \$36.00



### Peterkins

Another Kewpie-type doll. No movable  
parts. Molded, painted body suit. Painted  
eyes. Molded hair. 4¾" doll. Ref. ABD,  
pg. 14.

**S414 Peterkins®** complete,  
1 mold..... \$24.00

**Note**

**Complete**=Mold(s) for complete doll. If more  
than one mold is included in price, item  
number includes the letters **ST**, for Set.

**References:**

**ABD:** Dollmaker's Workbook, All Bisque Dolls

# All Bisque Dolls

Molds



**Sarah**

Lovely German head-torso doll with deeply molded hair, molded shoes and stockings. Painted eyes. 8" head-torso doll. Ref. MPD.

**S443ST Sarah**® complete, 3 molds... \$50.00

Pattern

**CP914** Dress, hat, coat, vest, panties, shoes ..... \$2.50

**CP915** Dress, hat, petticoat, combination ..... \$2.75



**Annette Jumeau**

Petite French doll with molded high-heel boots and socks. 5½" doll. Ref. ABD.

**S425 Annette Jumeau**® head mold... \$25.00 or

**S425ST Annette Jumeau**® complete, 4 molds (9425, L9425, B9425, S425) ..... \$50.00

Pattern

**BKDBP** Entire Wardrobe ..... \$5.95



**Nancy**

Content little girl. Molded hair decorated w. two molded bows. Molded shoes. 6" head-torso doll. Ref. ABD.

**S407ST Nancy Girl**® complete, 3 molds..... \$35.00



**Renee**

Supposedly French head-torso doll. Painted or glass eyes. Molded socks and shoes. 6½" doll. Ref. ABD.

**S410ST Renee**® complete, 2 molds... \$39.00

Pattern

**CP901** Crocheted dress and cape ... \$1.00

**Head-torso doll**  
Head and torso are one piece.  
Arms and legs are jointed.



**Elsbeth** *New!*

Smiling doll with three molded bows in hair and tilted head. Made by Gebruder Heubach. Marked: 10490 3. Head-torso doll. Intaglio eyes. Open-closed mouth. Molded shoes and socks. 7¼" doll. Ref. DW I.

**S453ST Elsbeth**® complete, 3 molds..... \$49.50

### All-Bisque Baby

On Elsbeth's arm. Jointed arms and legs. 2" doll. Ref. DHD.

**S522 Baby**® complete, 1 mold..... \$25.00



**Little Beth**

Probably French head-torso doll with fine features. Bare feet. 5" doll. Ref. ABD.

**S403 Little Beth**® complete, 1 mold ... \$30.00

Pattern

**CP914** Dress, hat, coat, vest, panties, shoes ..... \$2.50

### References

- ABD:** Dollmaker's Workbook, All Bisque Dolls
- DW I:** Dollmaker's Worksheet, First Series
- MPD:** Making Porcelain Dolls
- DHD:** Doll House Dolls

# All Bisque Dolls

## Babies and others.



### Tynie Babe

Rare little doll by Horsman. 8" doll. Ref. ABD, BD I.

**S434 Tynie Babe**® head mold..... \$30.00  
or

**S434ST Tynie Babe**® complete, 4 molds  
(S434, A9435, L9435, B9434)..... \$55.00

Pattern

**CP913** Pram Suit..... \$1.50

**L13407** Baby Layette..... \$4.95

### SFBJ Pouty

All-bisque version of precious Pouty, 252, by SFBJ. Painted or glass eyes. 8" doll. Ref. ABD, DW II. Fits body mold ALB9433 w. bent legs.

**S433 SFBJ Pouty252**® head mold... \$25.00

**ALB9433** Body mold, 3 molds..... \$30.00

Pattern

**L13407** Layette..... \$4.95



### Robie

Chubby baby w. molded hair and painted eyes. By Kestner. Marked: 589. 7" head-torso doll. Ref. DW II, ABD.

**S435ST Kestner's Robie**® complete, 3 molds..... \$45.00  
Pattern: See 'Tynie Babe.'

### Kestner Baby

Smaller version of Robie. Marked: 3. 5¼" head-torso doll. Ref. DW II.

**S404ST Kestner Baby**® complete, 3 molds..... \$40.00

Pattern

**CP902** Costume..... \$2.50

**L13405** Baby Layette..... \$4.95

### Eliminate Grating Joints

Before stringing, glue a round, fitted piece of leather or moleskin, with a hole in the middle, onto the flat joints of the torso to eliminate grating. This was done on many old dolls.

Excerpt from *Making Porcelain Dolls*.



### Bye-Lo

Tiny version of the beloved Bye-Lo. Head-torso doll. Painted eyes. Probably by Kestner. Marked: 20-1G. 4½" doll. Ref. see inside cover of catalog.

**S441ST All-Bisque Bye-Lo**® complete, 2 molds..... \$45.00

Pattern

**L13405** Layette..... \$4.95



### All-Bisque Hilda

For 7½" and 6½" Baby Hilda on all-Bisque body, see **Hilda IV** and **Hilda V**, page 27.

### Patching

Sometimes dolls have to be patched due to location of the pourholes. Pour a puddle of slip, slightly larger than the area to be patched, on the outside of a mold. Let sit, until only moist on top. Pick up the patch with a spatula and lay it wet side down, over the area to be patched. Brush a little wet slip around the edges, and smooth and shape the area with a soft brush and a damp silk sponge.

Let dry.

When the greenware is dry, polish gently with polyfill or nylon hose, so the patch becomes invisible.

Excerpt from *Dollmaker's Worksheet, Second Series*.

### References:

**ABD:** Dollmaker's Workbook, All Bisque Dolls

**BD I:** Dollmaker's Workbook, Baby Dolls I

**DW II:** Dollmaker's Worksheet, Second Series

# All Bisque Dolls - Kids and Nodders

## Molds

A Collection of Kids, one-piece dolls with molded clothes and painted eyes. So easy to decorate. Make great party-favors, decorations, and ornaments.



From left:

### Wedding Couple

Kids playing "wedding," make a lovely centerpiece for a cake. Girl in veil, holding flowers. Boy w. cane and tails. 3½" dolls. Base is separate, see below.

**S454 Wedding Couple**® 2 dolls  
in mold ..... \$22.00

### Small Kids

Girl holding molded dog, other kid a book. 2¼" dolls. Base separate, see below.

**S455 Small Kids**® 2 dolls in mold .... \$18.00

### Snow Kids

Dressed for playing in the snow. One w. doll, other w. teddybear. Two sizes, 2¾" and 2".

**S450 Snow Kids I**® 2 dolls in mold ... \$18.00

Smaller version:

**S451 Snow Kids II**® 2 dolls in mold... \$16.00

### Big Kids

Girl w. gift, boy w. sailboat. 2¾" dolls. Base separate, see below.

**S456 Big Kids**® 2 dolls in mold ... \$18.00

Bases for wedding cake:

**ES2028 Oval Base** mold ..... \$9.50  
(Molded flower wreath, 4½" long)

**ES2029 Round Base** mold ..... \$9.50  
(Plain, 3¾" diam.)

Reference:

The Doll Artisan, Vol. 9, No. 4 (S454)  
Vol. 10, No. 1 (S455, S456) Vol. 8, No. 2 (S450, S451).

### Nodders are dolls with jointed, so called noddling head.



### Santa Nodder

Just right for Christmas, this doll has molded, complete Santa suit, beard. Marked: *Germany*. 2¾" doll.

**S415 Santa Nodder**® complete,  
1 mold..... \$18.00



### Girl Nodders

Two little girls in molded coats and hats. One with muff, the other w. molded doll. 3" dolls. Ref. ABD.

**S422 Girl Nodders**®  
2 dolls in mold..... \$20.00

### Stringing Nodders

Nodders or loose-heads are strung, usually from hole in back of head to under coat or jacket. Do not string too tight.

Excerpt from *Dollmaker's Workbook, All Bisque Dolls.*

Reference: Article about Santa Nodder in *The Doll Artisan*, Vol. 5, No. 6.  
Pertains also to Girl Nodders.